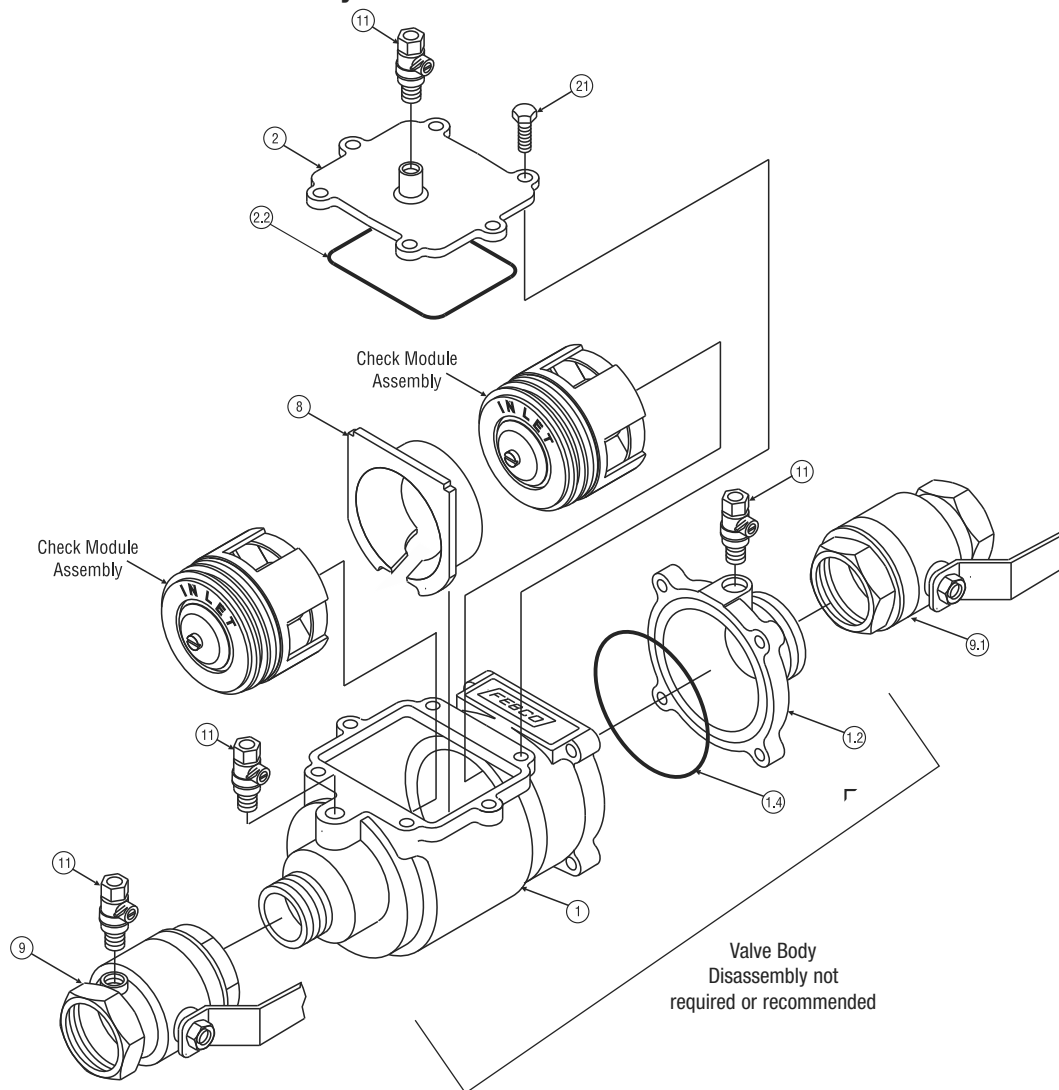
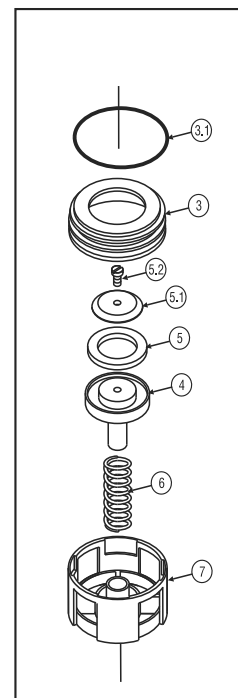


## 850, LF850, 850U, LF850U, 850B

1/2" - 2" Double Check Valve Assembly



**Models**  
**850/LF850**  
**& 860/LF860**  
**Check Module**  
**Assembly:**



Ordering Code	Style	Size	List Price
<b>Check Rubber Kit</b>			
905342	ALL	1/2" & 3/4"	\$ 12.00
905343	ALL	1"	13.75
905344	ALL	1 1/4"-2"	25.00

For both checks. Kit Includes: Items 1.4, 2.2 & 2 ea. of Items 3.1 & 5

<b>Single Check Kit†</b>			
905347	850	1/2" & 3/4"	33.25
905349	850	1"	38.00
905351	850	1 1/4"-2"	39.75

Valve has two checks. Kit Includes: Items 3 - 7

<b>Single Poppet Kit</b>			
905339	ALL	1/2" & 3/4"	13.75
905340	ALL	1"	15.00
905341	ALL	1 1/4"-2"	20.00

Valve has two poppets. Kit Includes: Items 4 - 5.2

Ordering Code	Style	Size	List Price
<b>COVER Kit</b>			
905618	ALL	1/2" & 3/4"	\$ 30.25
905619	ALL	1"	36.75
905620	ALL	1 1/4"-2"	69.75

Kit Includes: Items 2 and 2.2

†May use this kit for 850B with exception of spring (item #6). Contact factory service center for price and availability on 850B spring.

\*The wetted surface of this product contacted by consumable water contains less than 0.25% of lead by weight.

Supersedes all other price lists / Prices subject to change / Weights are estimated

†Grooved ends available on all OS&Y gate valves in some models and sizes. Expect larger lead times.

Detailed maintenance manuals can be downloaded at [www.FEBCOonline.com](http://www.FEBCOonline.com).