

Series 719, LF719

Double Check Valve Assemblies

Sizes 1/2" – 2"

Repair Kits

When ordering specify Ordering Code, Kit No., and Valve Size.

	ORDERING CODE	KIT NO.	SIZE	LIST PRICE
LEAD FREE*	Total Repair Kits			
	0889083	RK 719-T	1/2"	\$129.50
	0889084	RK 719-T	3/4"	187.00
	0889085	RK 719-T	1"	195.50
	0889086	RK 719-T	1 1/4" - 1 1/2"	355.50
	0889087	RK 719-T	2"	365.00

Kit consists of: 2 first or second check repair kits

	ORDERING CODE	KIT NO.	SIZE	LIST PRICE
LEAD FREE*	1st or 2nd Check Kits			
	0888100	RK 719R10 CK4	1/2" – 3/4"	88.25
	0889060	RK 719 CK4	1/2"	72.50
	0889061	RK 719 CK4	3/4"	104.50
	0889062	RK 719 CK4	1"	108.50
	0888101	RK 719 CK4	1 1/4" – 1 1/2"	199.00
	0888102	RK 719 CK4	2"	204.00

Kit consists of: disc holder, spring and cover O-ring.

	ORDERING CODE	KIT NO.	SIZE	LIST PRICE
LEAD FREE*	1st or 2nd Check Rubber Parts Kits			
	0889063	RK 719 RC4	1/2"	22.75
	0889064	RK 719 RC4	3/4"	22.75
	0889065	RK 719 RC4	1"	22.75
	0888104	RK 719 RC4	1 1/4" – 1 1/2"	29.00
		0888105	RK 719 RC4	2"

Kit consists of: disc rubber, seat O-ring and cover O-ring.

	ORDERING CODE	KIT NO.	SIZE	LIST PRICE
LEAD FREE*	1st or 2nd Check Seat Kits			
	0888997	RK 719R10 S	1/2" – 3/4"	62.50
	0889069	RK 719 S	1/2"	56.00
	0889070	RK 719 S	3/4"	73.25
	0889071	RK 719 S	1"	75.50
	0888998	RK 719 S	1 1/4" – 1 1/2"	115.00
		0888999	RK 719 S	2"

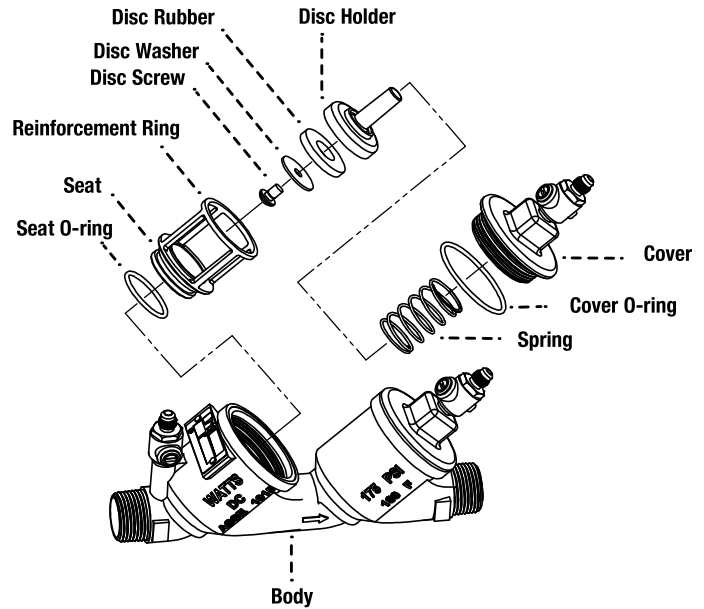
Kit consists of: seat, seat O-ring and cover O-ring.

	ORDERING CODE	KIT NO.	SIZE	LIST PRICE
LEAD FREE*	Complete Valve Rubber Parts Kits			
	0889078	RK 719 RT	1/2"	88.00
	0889079	RK 719 RT	3/4"	90.50
	0889080	RK 719 RT	1"	110.00
	0889081	RK 719 RT	1 1/4" – 1 1/2"	116.50
		0889082	RK 719 RT	2"

Kit consists of: 2 check seat O-rings, 2 check cover O-rings, 2 check rubbers.

	ORDERING CODE	KIT NO.	SIZE	LIST PRICE
LEAD FREE*	1st or 2nd Check Cover Kits			
	0889072	LFRK 719-R10-C	1/2" – 3/4"	148.50
	0794039	LFRK 719 C	1/2"	112.50
	0794040	LFRK 719 C	3/4"	183.00
	0794041	LFRK 719 C	1"	190.50
	0794042	LFRK 719 C	1 1/4" – 1 1/2"	251.00
	0794043	LFRK 719 C	2"	293.50

Kit consists of: cover and cover O-ring.



For 1 1/4" 719R15 models use 1 1/4" - 1 1/2" repair kits.

*The wetted surface of this product contacted by consumable water contains less than 0.25% of lead by weight.