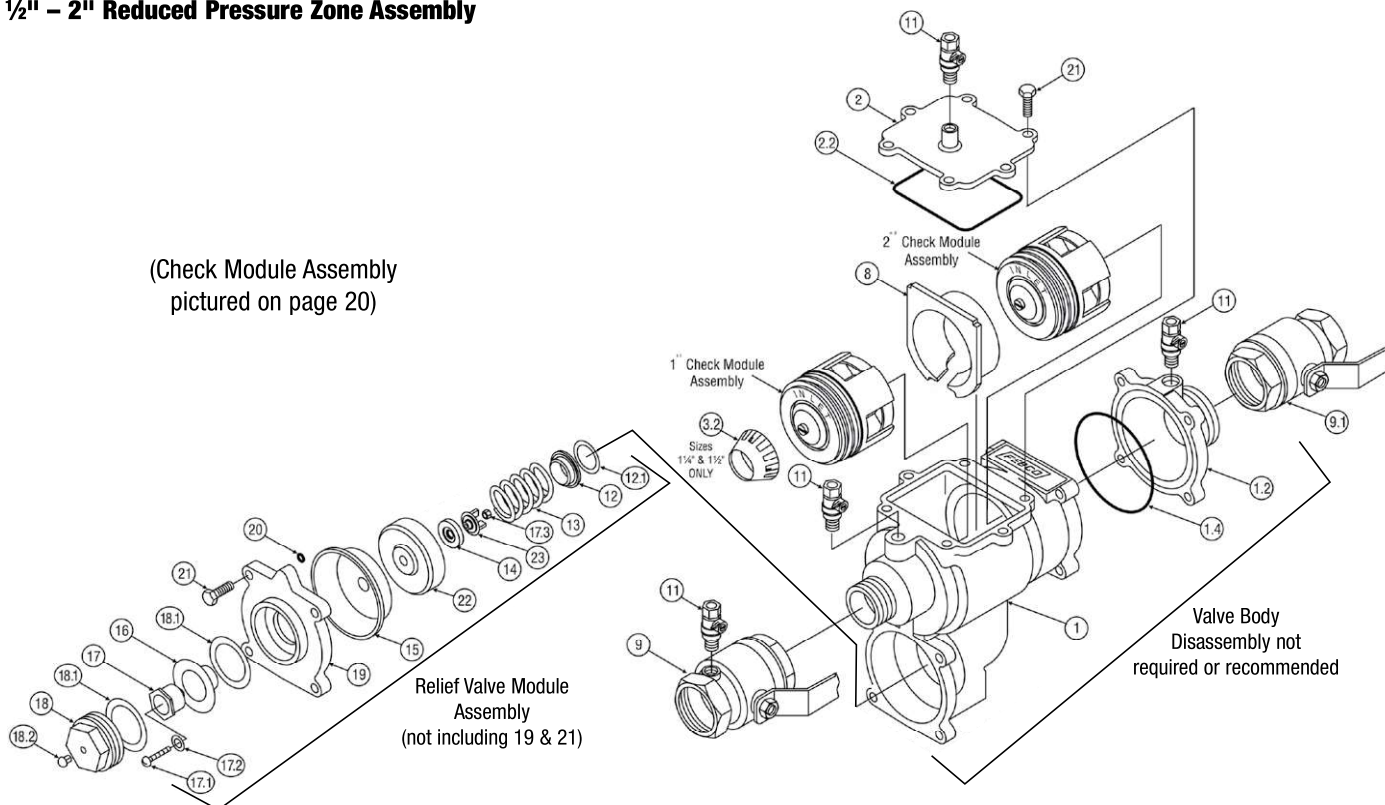


860, LF860, 860U, LF860U, 880, 880U

1/2" - 2" Reduced Pressure Zone Assembly

(Check Module Assembly
pictured on page 20)



| Ordering Code | Style | Size | List Price |
|--------------------------------------------------------------|-------|-------------|------------|
| Complete Rubber Kit | | | |
| LEAD FREE 905355 | ALL | 1/2" & 3/4" | \$ 61.00 |
| 905356 | ALL | 1" | 63.75 |
| 905357 | ALL | 1 1/4"-2" | 92.00 |
| Kit Includes: All rubber parts | | | |
| Check Module Rubber Kit | | | |
| LEAD FREE 905342 | ALL | 1/2" & 3/4" | 19.75 |
| 905343 | ALL | 1" | 22.75 |
| 905344 | ALL | 1 1/4"-2" | 40.00 |
| Both checks. Kit Includes: Item 2.2 & 2 ea. of items 3.1 & 5 | | | |
| Relief Valve Rubber Kit | | | |
| LEAD FREE 905345 | ALL | 1/2" & 3/4" | 45.75 |
| 905345 | ALL | 1" | 45.75 |
| 905346 | ALL | 1 1/4"-2" | 63.75 |
| Kit Includes: Items 12, 12.1, 14 - 16, 18.1 (2 ea) & 20 | | | |
| Single Poppet Kit | | | |
| LEAD FREE 905339 | ALL | 1/2" & 3/4" | 22.75 |
| 905340 | ALL | 1" | 24.25 |
| 905341 | ALL | 1 1/4"-2" | 32.75 |
| Valve has two poppets. Kit Includes: Items 4 thru 5.2 | | | |

| Ordering Code | Style | Size | List Price |
|--------------------------------------------------------------------|-------|-------------|------------|
| #1 Check Module Kit (inlet) | | | |
| LEAD FREE 905348 | ALL | 1/2" & 3/4" | \$ 55.75 |
| 905350 | ALL | 1" | 63.75 |
| 905352 | ALL | 1 1/4"-2" | 63.75 |
| Kit Includes: Items 3 - 7 for inlet check | | | |
| #2 Check Module Kit (outlet) | | | |
| LEAD FREE 905347 | ALL | 1/2" & 3/4" | 53.25 |
| 905349 | ALL | 1" | 61.00 |
| 905351 | ALL | 1 1/4"-2" | 63.75 |
| Kit Includes: Items 3 - 7 for outlet check | | | |
| Full Relief Valve Module Kit | | | |
| LEAD FREE 905421 | ALL | 1/2" & 3/4" | 170.00 |
| 905421 | ALL | 1" | 170.00 |
| 905422 | ALL | 1 1/4"-2" | 322.00 |
| Kit Includes: 1 ea of Items 12 - 17.3, 20, 22 & 23 & 2 ea. of 18.1 | | | |
| Cover Kit | | | |
| LEAD FREE 905618 | ALL | 1/2" & 3/4" | 46.50 |
| 905619 | ALL | 1" | 56.50 |
| 905620 | ALL | 1 1/4"-2" | 107.50 |
| Kit Includes: Items 2 and 2.2 | | | |

*The wetted surface of this product contacted by consumable water contains less than 0.25% of lead by weight.

Supersedes all other price lists / Prices subject to change / Weights are estimated

¹Grooved ends available on all OS&Y gate valves in some models and sizes. Expect larger lead times.

Detailed maintenance manuals can be downloaded at www.FEBCOonline.com.